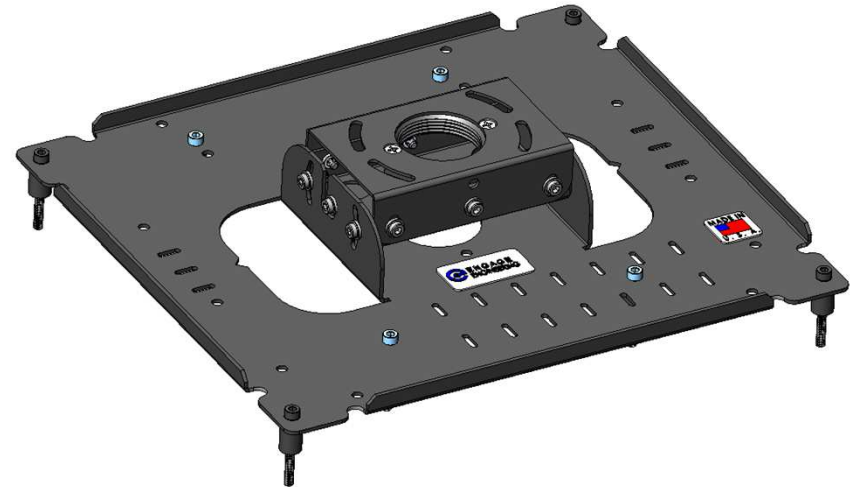


# INSTALL & ADJUST INSTRUCTIONS FOR JVC, SONY, & EPSON VIDEO PROJECTOR CEILING MOUNT Classic, HT, & HT Pro



JVC NZ9 shown for  
reference only






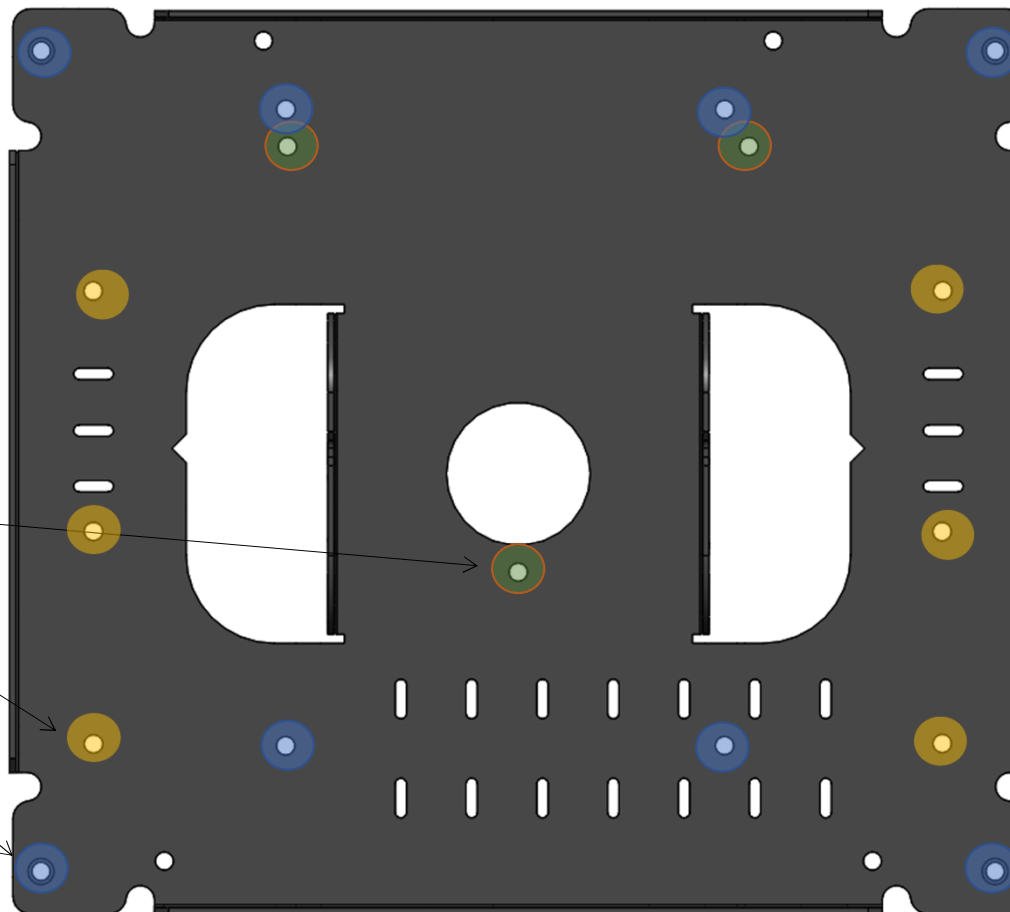
# PROJECTOR COMPATIBILITY



Front of Projector

This mount can accommodate 3 brands of projectors; JVC, Sony, & Epson. Below are the mounting locations for each brand.

-  Sony (3)
-  Epson (6)
-  JVC (4 & 4)  
See pgs 8 & 9



Projector Ceiling Mount

## JVC

All DLA Projectors:  
RS, NZ, NX, X, & VS  
Series

## Sony

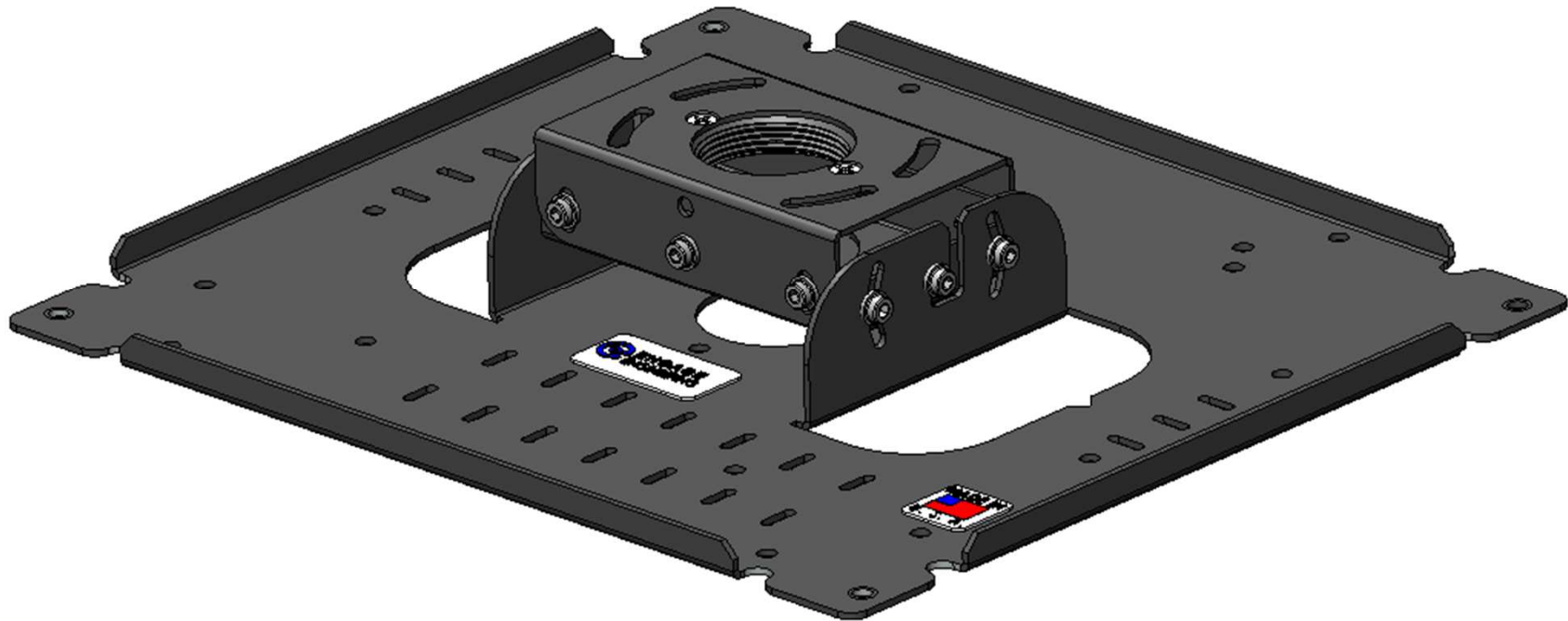
VW995, VW695  
XW6000ES  
Many more

## Epson

5050, 6050,  
LS12000  
Many more

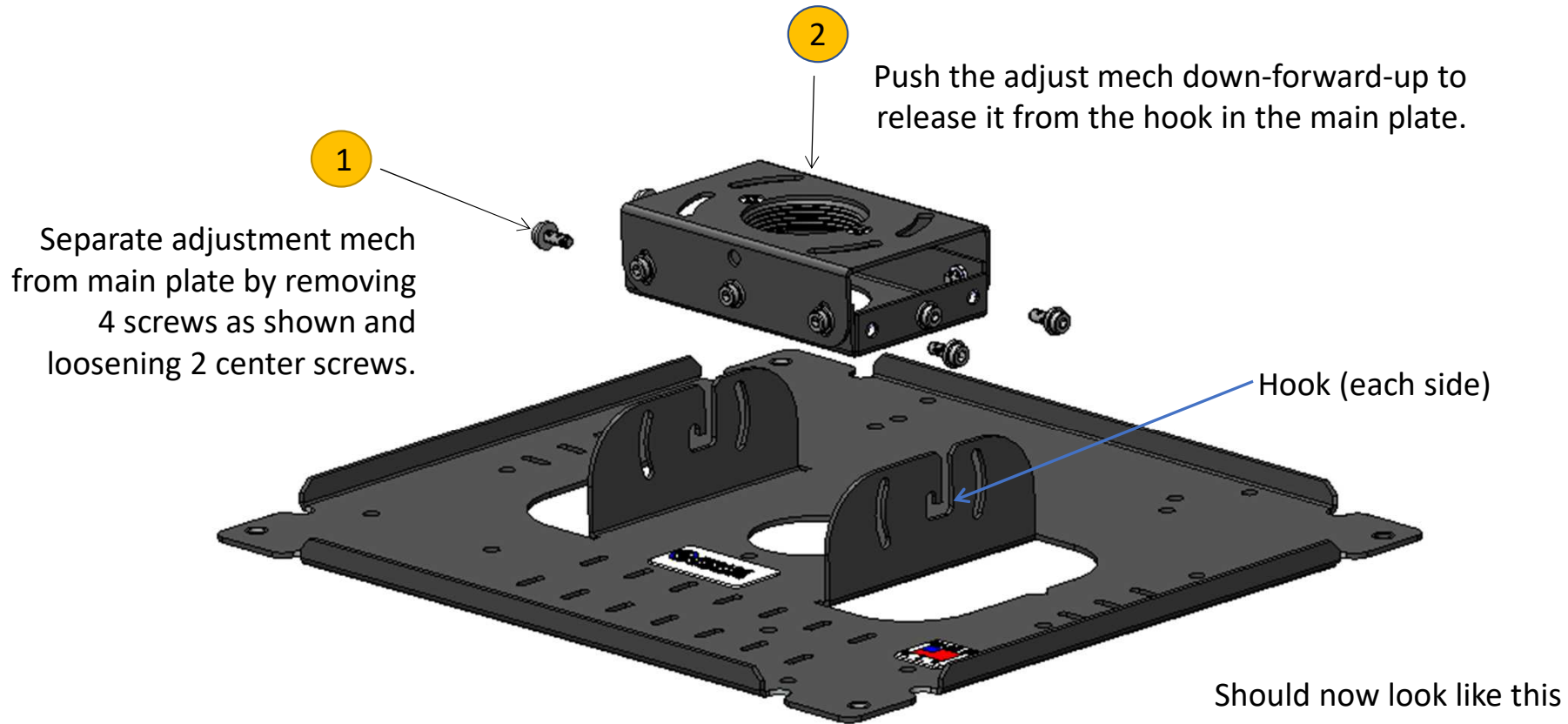
The above list is only a starting point and is not complete. Far too many models to test and list.

## Out of the Box



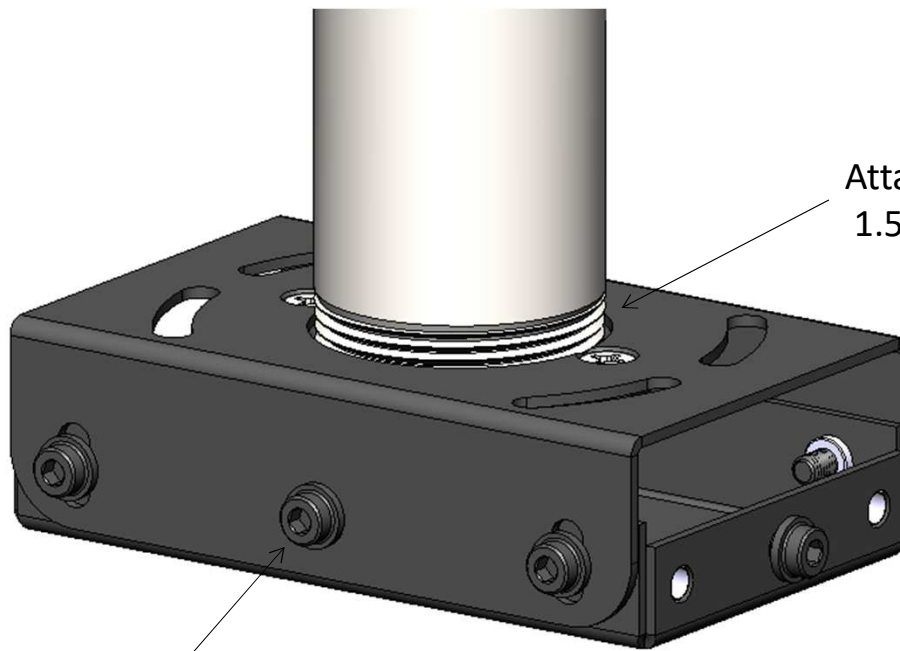
Projector Ceiling Mount

# Preparation of the Mount



# Preparation of the Ceiling

If attaching to a pipe from the ceiling



Attach adjustment mech to  
1.5" NPT pipe (not included)

Should now look like this

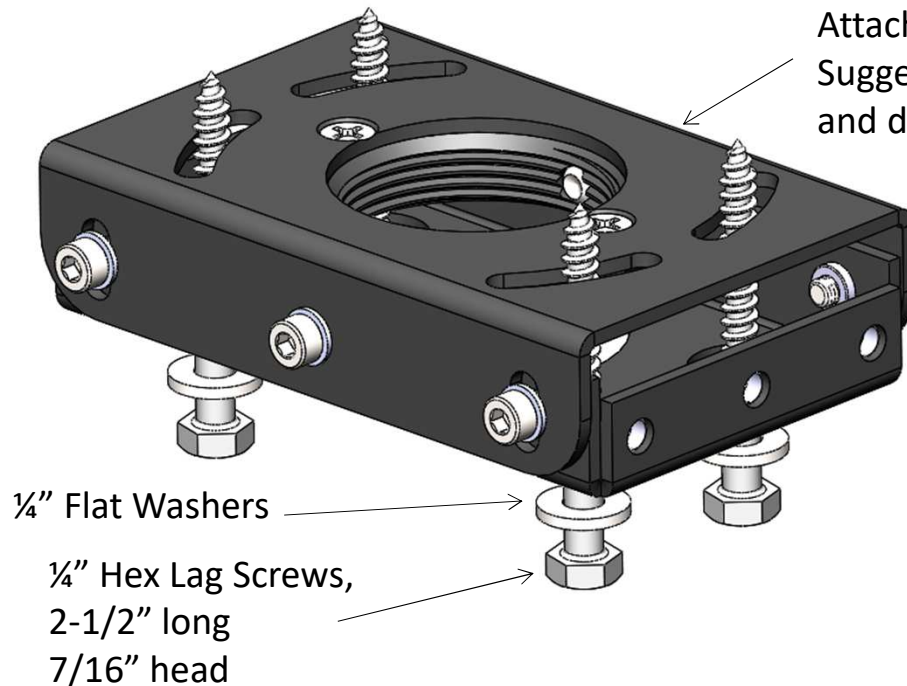
Roll Screws (6)

Loosen when ready to adjust for roll, then retighten when mount is level.  
Suggest using a bubble level on the bottom surface to help with this step.

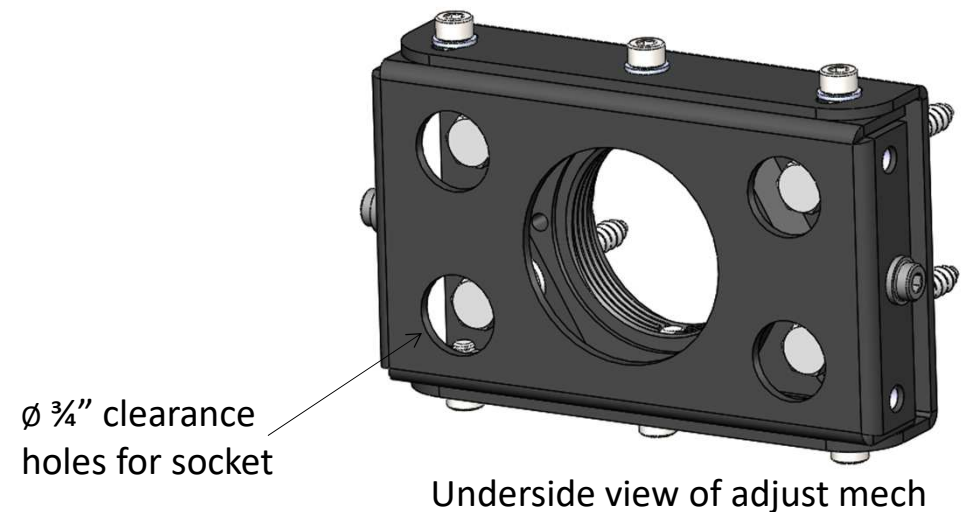
# Preparation of the Ceiling

If attaching to wood in the ceiling.

Lag screws and washers are **not** included. They are available for free by request if the mount is ordered through our website. Otherwise, they are easily sourced from Home Depot or Lowes. Use the description below to get the correct size.

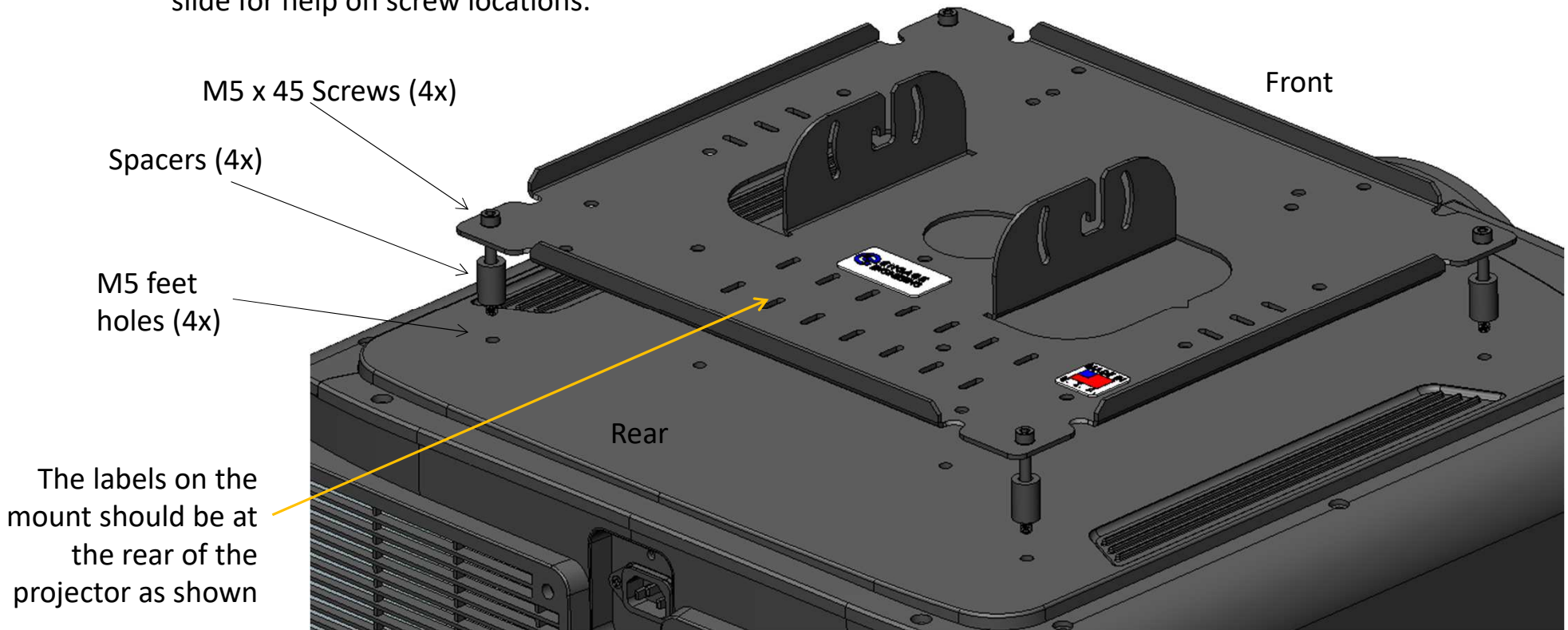


Attach adjustment mech to wood joists in ceiling.  
Suggest predrilling holes around  $\varnothing 3/16"$  to  $\varnothing 0.204"$   
and drill them at least 2-1/2" deep.



# Preparation of the Projector

Install main plate to projector using provided screws, spacers, and tools. See compatibility slide for help on screw locations.



Projector Ceiling Mount



# Preparation of the Projector

## For JVC only and using Engage HT Pro

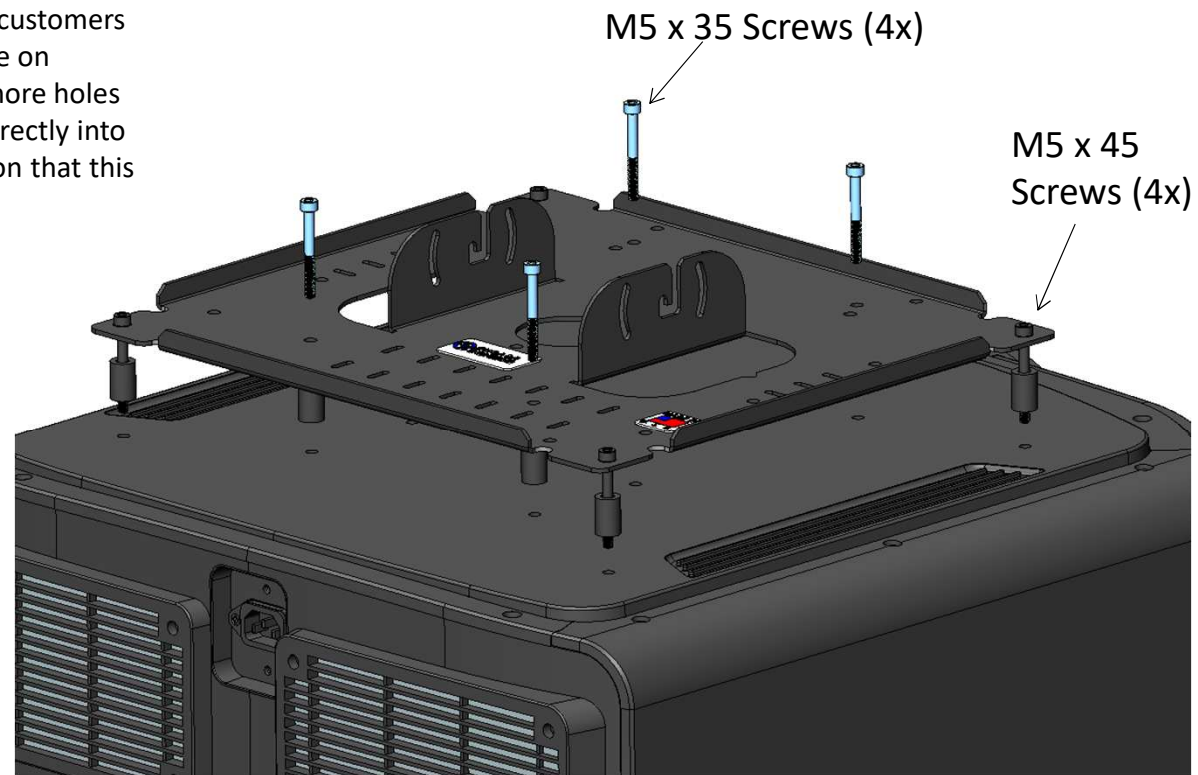


The new JVC laser projectors are heavier, which is leading some customers to be wary about using only 4 screws to hold it up. Due to its use on motion platforms in the Flight Simulation market, JVC added 6 more holes in the center section on the bottom of the projector. These go directly into the optics casting and provide the added strength and registration that this high-end market requires.

However, some integrators would prefer to not mention these holes because a different length screw is used there and they don't want to get the screws confused.

We provide the correct length 4 screws and spacers to be used in this location if desired. They are bagged separately and clearly marked "JVC Extra Strong Screw Kit". These screws are 10mm shorter than the ones installed in the previous step. There should not be any confusion if the 4 corner screws are installed first before moving on to these 4 inner screws.

JVC says that the 4 feet screw locations are enough to hold the projector weight, but that it is up to you as long as you use the correct length screws.



Projector Ceiling Mount



# Easy Installation and Adjustment



## 2 Pitch Screws

Add the remaining 4 screws in the slots and then tighten all 6 screws to fix the angle when level. Suggest using a bubble level to help.

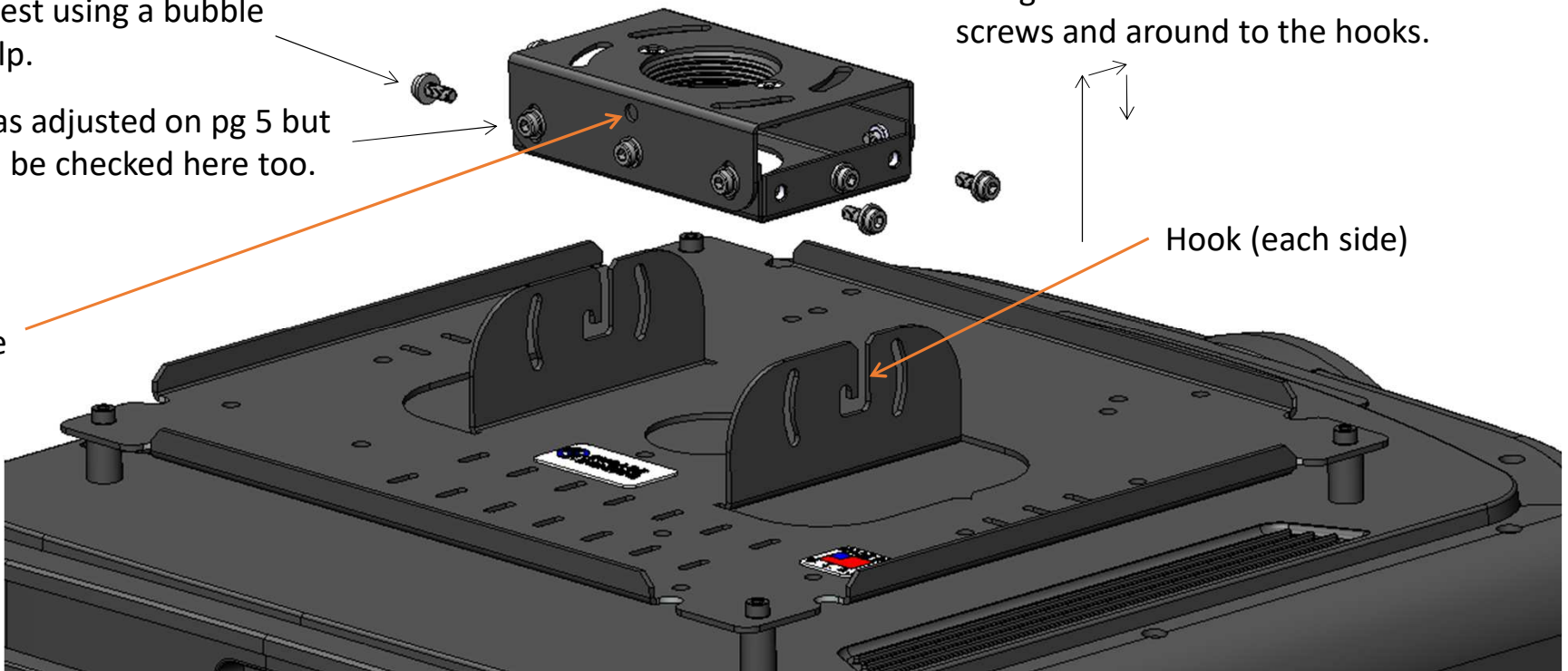
3 Roll was adjusted on pg 5 but should be checked here too.

4 Rotate the projector about the pipe axis until as desired. Tighten the setscrew into the pipe to fix the rotation.

1

Using 2 people, lift mount/projector up and guide the slots onto the 2 center screws and around to the hooks.

Hook (each side)



Projector Ceiling Mount

## Ready to add cables as needed

Use the cable ties and these slots to attach and dress the cables coming to your projector. This is also a good place to attach your streaming sticks.



Should now look like this

Projector Ceiling Mount

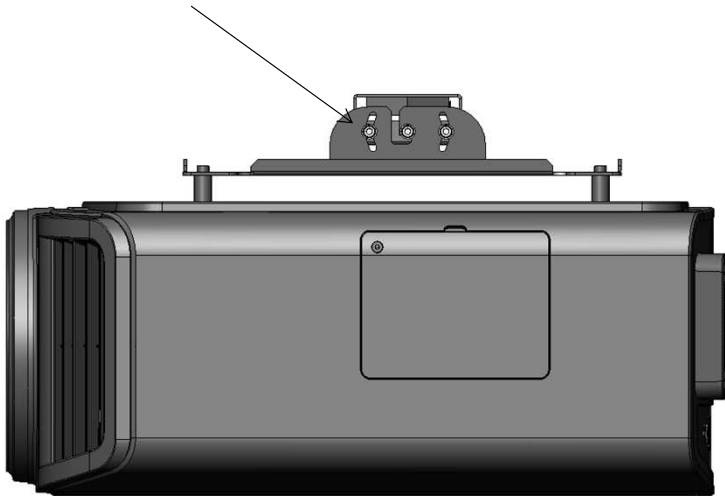
# Adjustment for Pitch and Roll



## Pitch Adjustment

6 black, flanged, screws.  
3 on each side.

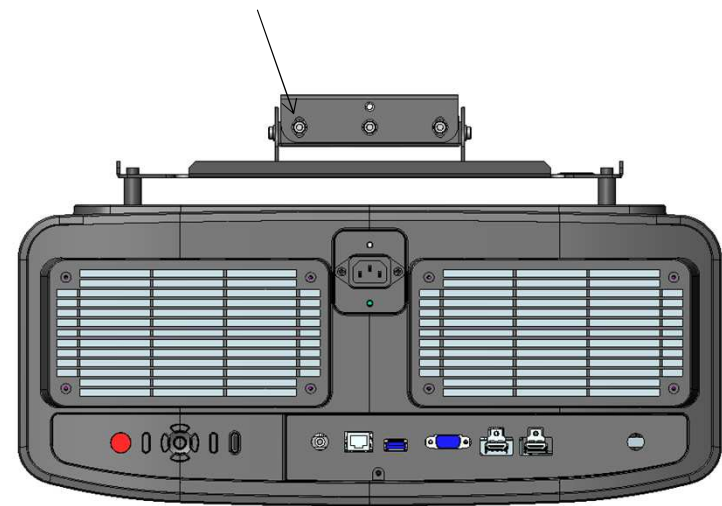
- Loosen them all with wrench provided.
- Push front up/down as needed.
- Retighten all 6 screws.



## Roll Adjustment

6 black, flanged, screws.  
3 on each side.

- Loosen them all with wrench provided.
- Push side up/down as needed.
- Retighten all 6 screws.



JVC NZ9 shown for reference only

# CEILING MOUNTING

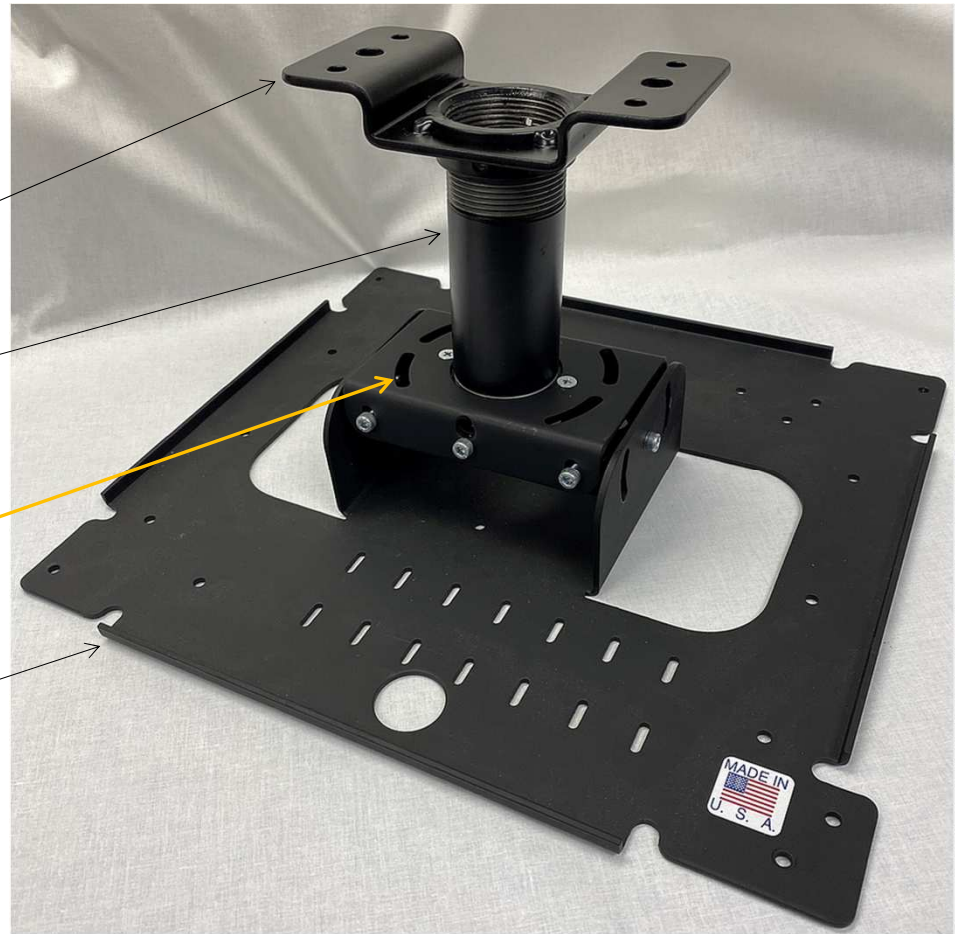
## A typical arrangement of parts

Ceiling Adapter  
(not supplied)

Threaded pipe  
(not supplied)

This projector mount has the feature of attaching directly to your ceiling using the 4 radial slots shown here.

Projector Mounting Plate



Projector Ceiling Mount